
File ID: 2026-01080

5/19/2026

Sutter's Landing Park ADA River Access Trail Project Concept Plan Approval

File ID: 2026-01080

Location: District 4

Recommendation: Adopt a **Resolution:** 1) adopting the Initial Study/Mitigated Negative Declaration and the Mitigation Monitoring Program for the Sutter's Landing Park River Access Trail project; and 2) approving the concept plans for the Sutter's Landing Park ADA River Access Trail Project.

Contact: Tin-Wah Wong, Associate Landscape Architect, (916) 808-5540, twong@cityofsacramento.org; Jason Wiesemann, Park Planning & Development Services Manager, (916) 808-7634, jwiesemann@cityofsacramento.org; Department of Youth, Parks, and Community Enrichment

Presenter: None

Attachments:

- 1-Description/Analysis
- 2-Sutter's Landing Park ADA River Access Trail Concept Plans
- 3-Resolution

Description/Analysis

Issue Detail: Sutter's Landing Regional Park is a 204-acre regional park located at 20 28th Street in Community Planning Area 1, Council District 4.

In November 1995, the City Council adopted a Preliminary Master Plan for Sutter's Landing Regional Park. The 1995 Plan specifically identified a car-top boat launch at the American River waterfront within the overall development goals of the park; however, the Plan then lacked a dedicated pedestrian access leading to the waterfront. The recently updated Site Plan (2025) added further improvements to the park, as the park's footprint expanded to the west. The update to the Site Plan received community input that supported the need for improved access and additional trails. The adopted Site Plan update reflected that input and incorporated pedestrian trails and connections. In 2023, the City was awarded a Proposition 68 grant from the State of California Wildlife Conservation Board to prepare the feasibility studies, conduct public outreach, prepare environmental documentation, obtain permits, and develop construction documents for the Sutter's Landing Park

ADA River Access Trail Project. The Project, once constructed, will enable the city to implement a component of the development goals of the 1995 Site Plan for the regional park and the additional trail connections the community requested in the 2025 update to the Site Plan.

The City, in collaboration with the County of Sacramento, proposes to construct an ADA-compliant pedestrian access trail connecting the Sutter's Landing Park parking lot to Sutter's Landing Beach in the City of Sacramento. The purpose of the project is to provide safe and accessible access to Sutter's Landing Beach for recreational users of all ages and abilities. The paved trail would help define the river access point and reduce informal social trails along the riverfront while protecting native habitat. The project also includes restoration and habitat enhancement of approximately 5 acres adjacent to Sutter's Landing Beach, as well as interpretive signage at the new trailhead.

The proposed improvements include a set of concrete stairs descending the face of the levee, along with two ADA-compliant concrete trails located to the east and west of the stairs. The stairs and trails would converge at a concrete landing at the base of the levee, where trash receptacles and safety vests would be provided. From this landing, a single concrete trail would continue north toward the river, providing access to two concrete pads that could accommodate picnic tables.

The concrete trail would terminate at the entrance to the beach, where accessible mats would be installed to provide access to the river's edge. The alignment of the trail to the water's edge would be selected to minimize impacts to large trees and sensitive riparian vegetation. The concrete trails are designed to accommodate pedestrian use only.

The project is currently in the preliminary design and environmental clearance stage. The City was awarded a Proposition 68 grant from the State of California Wildlife Conservation Board to prepare feasibility studies, conduct public outreach, and prepare environmental documentation, permitting, and construction documents. While the original funding application indicated that the City was planning to construct a concession stand that would include paddleboard and kayak rentals, the City's initial feasibility study determined that a formal dock at this location was not feasible. As such, the nature of the goods/services available, if any, at the ranger station and restroom building has not yet been determined.

Policy Considerations: Providing accessible parks and recreation facilities is consistent with the City's plans to achieve sustainability and livability and to expand economic development throughout the City.

Specifically, the proposed project is consistent with the following Key Directions in Parks Plan 2040:

- Key Direction #3 to Ensure Access, by providing accessible paths that support greater facility use by people of all abilities; and
- Key Direction #6 to Foster Nature and Trail Connections, by partnering with other agencies

and departments to improve connections to parks via trails.

It is also consistent with the following Parks Plan 2040 Policies Appendix D. 1. Parks, Parkways & Open Space Policies:

- 1.9 c. Universal, All-Inclusive Access - Meet and where possible exceed the standards of the Americans with Disabilities Act (ADA) to provide parks and facilities that accommodate all ages and abilities, including people with mobility issues, sight and hearing impairments, allergies, and other special needs. Integrate and consider all options of modality and accessibilities; and
- 1.15 Access to Nature and Waterways - Improve waterfront access, recreation, and management through collaboration.
 - Subsection a. Increase and/or formalize informal access points to river parkways, particularly focusing on residential areas that lack park access within a 10-minute walk.
 - Subsection b. Work with regional partners, State agencies, non-profit and community groups, private landowners, and land developers to manage, preserve, improve habitat value, enhance use and access to the Sacramento and American River Parkways, urban waterways, and riparian corridors to increase public access for active and passive recreation and habitat values.

Finally, the proposed project is consistent with the following 2040 General Plan policies:

- YPRO-1.11 Enhancing Access to Parks - the City shall pursue strategies that increase community access to parks and recreational facilities, including the following: Providing a choice of legible and navigable routes to and from park areas through the installation of new or improved multi-use shared paths, wayfinding signage, and coordination with public transit; and
- YPRO-1.17 Waterway Recreation and Access - The City shall work with regional partners, State agencies, non-profit and community groups, private landowners, and land developers to manage, preserve, improve, and enhance use and access to the Sacramento and American River Parkways, urban waterways and riparian corridors to increase public access for active and passive recreation and habitat values.

Economic Impacts: Not applicable.

Environmental Considerations: The City of Sacramento prepared a Mitigated Negative Declaration (MND) for the Sutter's Landing Park River Access Trail Project pursuant to California Environmental Quality Act (CEQA) Guidelines, section 15178(b),(c). The draft MND was circulated for a public review and comment period from November 26, 2025, to December 31, 2025, in accordance with CEQA Guidelines Section 15073. The comment period was also advertised in a newspaper of general circulation. A notice of availability / notice of intent to adopt the MND was posted in the County Clerk's Office and was sent to applicable regulatory agencies, neighborhood associations, and stakeholders in the project area.

The City received more than twenty-two letters during the public comment period. The comment letters and responses are included on the City's Community Development Department (CDD) webpage under the Sutter's Landing Park ADA River Access Trail Project heading (webpage listed below). In response to comments, information was added to clarify and amplify the mitigated negative declaration. No new significant effects were identified, and no new mitigation measures or project revisions were required to address the project's impacts.

The Environmental Services Manager has determined that adoption of the Mitigated Negative Declaration and Mitigation Monitoring and Reporting Plan are appropriate actions under the CEQA. The initial study/MND for the project, the revised MND, comments and responses, and the Mitigation Monitoring and Reporting Program are available online at the following address:

<https://www.cityofsacramento.gov/community-development/planning/environmental/impact-reports>

Sustainability: The Sutter's Landing Park River Access Trail Project has been reviewed for consistency with the goals, policies, and targets of the City's Climate Action Plan for Internal Operations 2016 Update, the 2040 General Plan, the 2018 YPCE Strategic Plan, and the Parks Plan 2040. The project will advance the goals, policies, and targets of these plans by reducing greenhouse gas emissions and air pollution, including native and drought-tolerant plantings, and improving the health of all residents through access to a diverse mix of wellness activities. Individual products have not been chosen at this level of development, but the design will include products from recycled materials, if available.

Commission/Committee Action: Not applicable.

Rationale for Recommendation: The City was awarded a Proposition 68 grant from the State of California Wildlife Conservation Board to prepare the feasibility studies, public outreach, environmental documentation, permitting, and construction documents for the Sutter's Landing Park River Access Trail project.

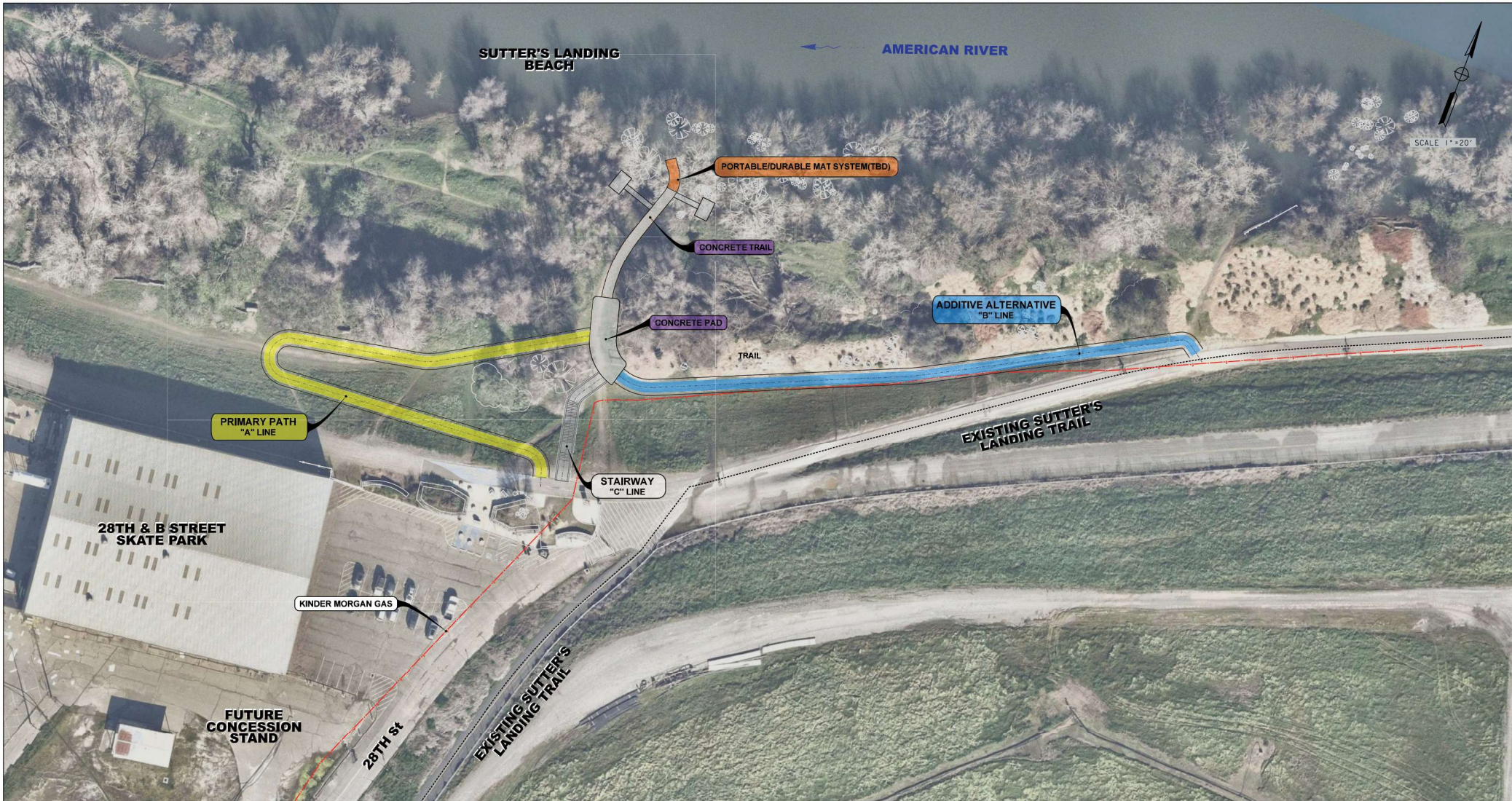
Council adoption of the IS/MND and MMRP is required prior to moving forward with permitting and the development of construction documents. The anticipated completion date for this planning phase, including environmental documentation, permitting, and construction document development is June 22, 2027.

Financial Considerations: Funding has been secured in the amount of \$950,000 from the State of California Wildlife Conservation Board to prepare the feasibility studies, public outreach, environmental documentation, permitting, and construction documents for the Sutter's Landing Park ADA River Access Trail Project.

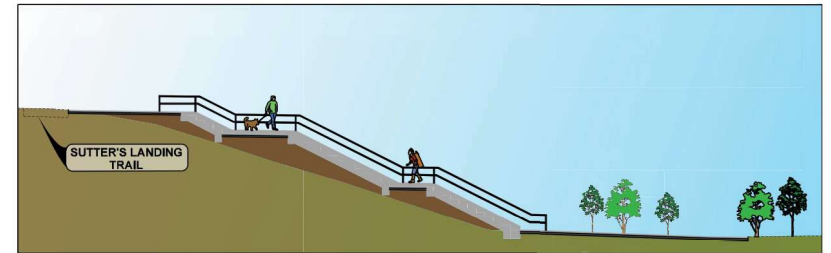
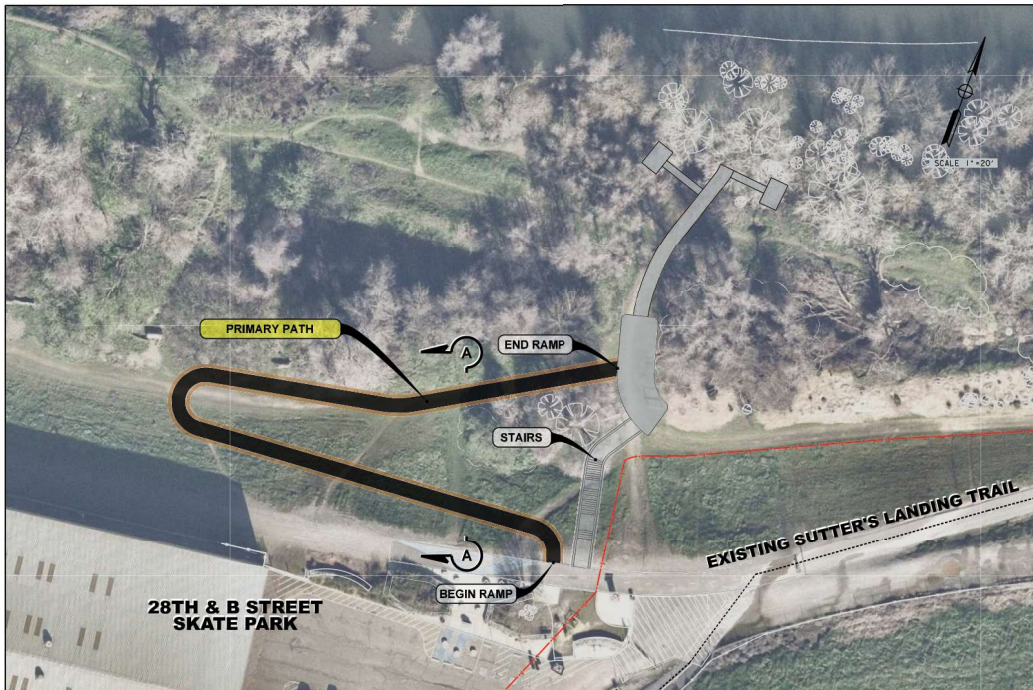
Staff will seek funding opportunities for the construction phase.

Local Business Enterprise (LBE): Not applicable.

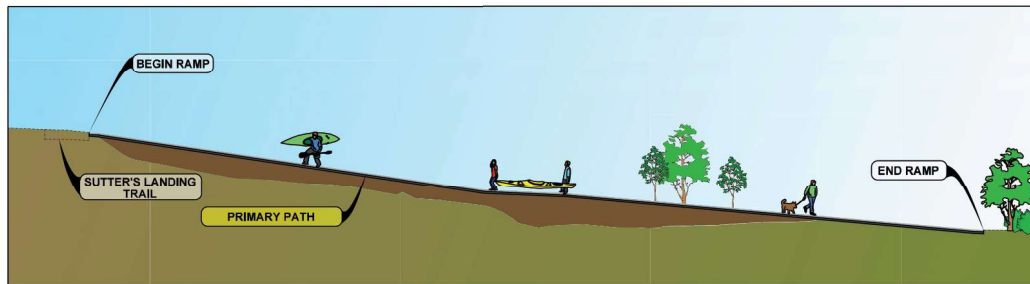
Sutter's Landing Park River Access Trail CONCEPT PLAN



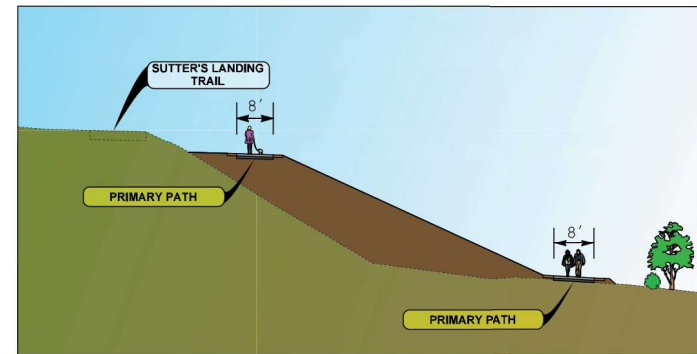
Sutter's Landing Park River Access Trail PRIMARY PATH ALIGNMENT



STAIRS PROFILE



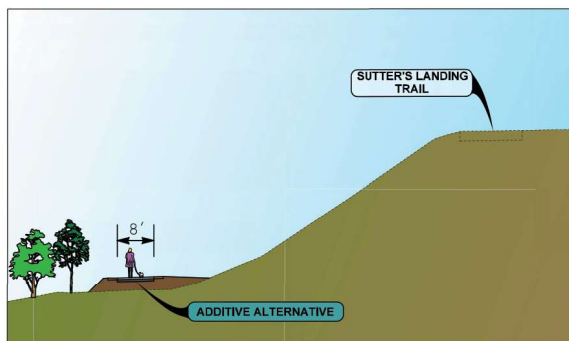
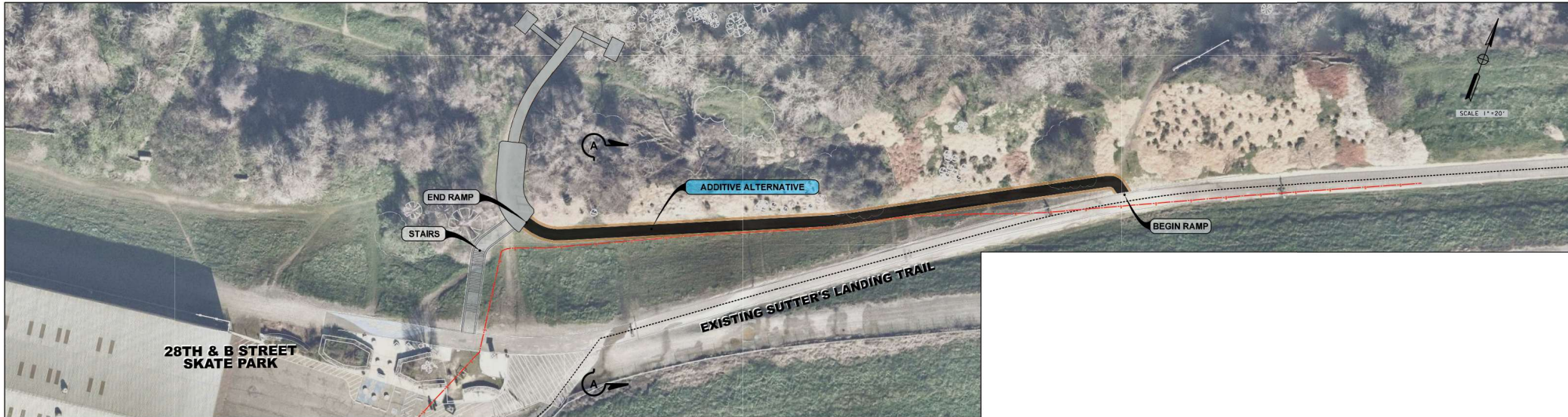
PRIMARY PATH PROFILE



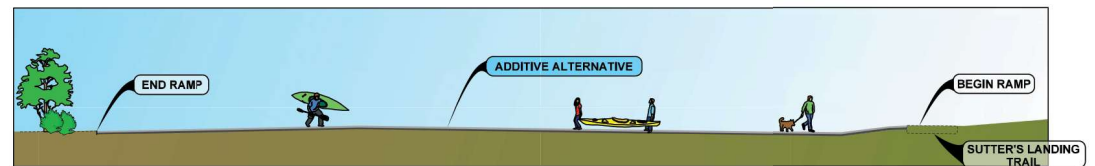
SECTION A-A

Sutter's Landing Park River Access Trail

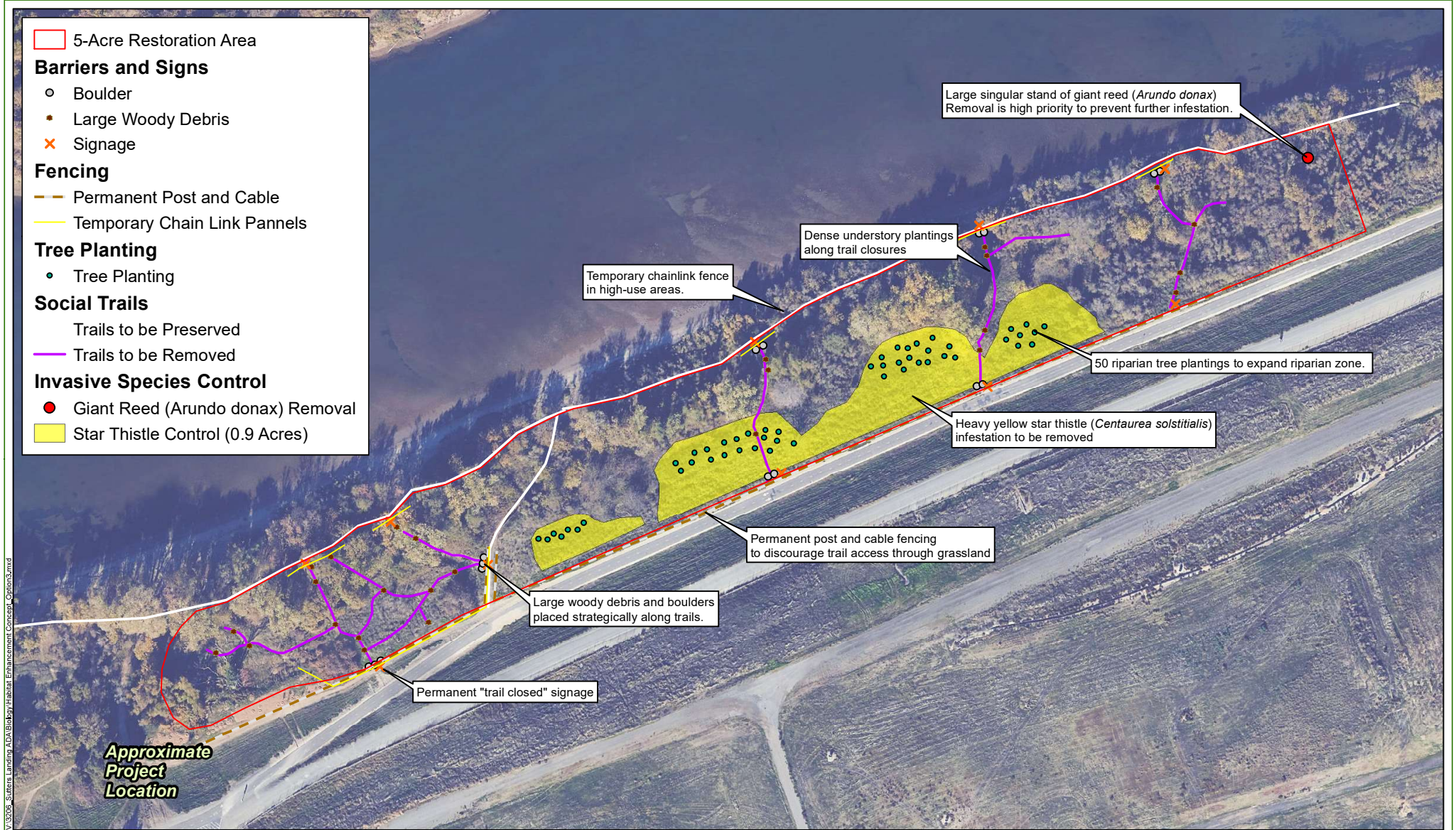
ADDITIVE ALTERNATIVE ALIGNMENT



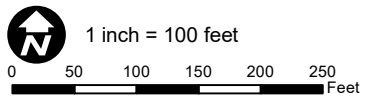
SECTION A-A



ADDITIVE ALTERNATIVE PROFILE



Source: ESRI Maps Online; Dokken Engineering 3/6/2025; Created by: scotts



Sutter's Landing Park River Access Trail RESTORATION CONCEPT PLAN

Habitat Enhancement Concept
Invasive Species Removal, Tree Planting, and Trail Closures

Mitigated Negative Declaration Findings per GP MEIR– City Council Resolution

RESOLUTION NO. 2026-

Adopted by the Sacramento City Council

APPROVING THE TRAIL CONCEPT PLAN AND RESTORATION CONCEPT PLAN FOR THE SUTTER’S LANDING PARK RIVER ACCESS TRAIL PROJECT (L19913000)

BACKGROUND

A. On April 28, 2026, the City Council conducted a public meeting, for which notice was given pursuant Sacramento City Code and received and considered evidence concerning the Sutter’s Landing Park ADA River Access Trail Project (L19913000).

BASED ON THE FACTS SET FORTH IN THE BACKGROUND, THE CITY COUNCIL RESOLVES AS FOLLOWS:

Section 1. The City Council finds as follows:

A. The Project initial study determined, based on substantial evidence, that the Project is an anticipated subsequent project identified and described in the 2040 General Plan Master EIR; that the Project is consistent with the 2040 General Plan land use designation and the permissible densities and intensities of use for the project site; that the discussions of cumulative impacts, growth inducing impacts, and irreversible significant effects in the Master EIR are adequate for the Project; and that the Project **would** have additional potentially significant environmental effects not previously examined in the Master EIR. Mitigation measures from the Master EIR were applied to the Project as appropriate, and revisions to the Project made by or agreed to by the Project applicant before the proposed mitigated negative declaration and initial study were released for public review were determined by City’s Environmental Planning Services to avoid or reduce the potentially significant effects to a less than significant level, and, therefore, there was no substantial evidence that the Project as revised and conditioned may have a significant effect on the environment. A Mitigated Negative Declaration (MND) for the Project was then completed, noticed and circulated in accordance with the requirements of the California Environmental Quality Act (CEQA), the State CEQA Guidelines and the Sacramento Local Environmental Procedures as follows:

1. On November 26, 2025, a Notice of Intent to Adopt the MND (NOI) was circulated for public comments for 30 days. The NOI was sent to those public agencies

that have jurisdiction by law with respect to the proposed project and to other interested parties and agencies, including property owners within 500 feet of the boundaries of the proposed project. The comments of such persons and agencies were sought.

2. On November 26, 2025, the NOI was published in the Sacramento Bulletin, a newspaper of general circulation, and the NOI was posted in the office of the Sacramento County Clerk.

3. Revisions were made for clarification purposes and pursuant to CEQA Guidelines Section 15073.5, no recirculation of the MND is required.

Section 2. The City Council has reviewed and considered the information contained in the MND, including the initial study, the revisions and conditions incorporated into the Project, and the comments received during the public review process and the hearing on the Project. The City Council has determined that the MND constitutes an adequate, accurate, objective and complete review of the environmental effects of the proposed project.

Section 3. Based on its review of the MND and on the basis of the whole record, the City Council finds that the MND reflects the City Council's independent judgment and analysis and that there is no substantial evidence that the Project will have a significant effect on the environment.

Section 4. The City Council adopts the MND for the SUTTER'S LANDING PARK RIVER ACCESS TRAIL PROJECT (L19913000).

Section 5. Pursuant to CEQA section 21081.6 and CEQA Guidelines section 15074, and in support of its approval of the Project, the City Council adopts a Mitigation Monitoring Program to require all reasonably feasible mitigation measures, including mitigation measures from the Master EIR as appropriate, be implemented by means of Project conditions, agreements, or other measures, as set forth in the Mitigation Monitoring Program.

Section 6. Upon approval of the Project, the City Manager shall file or cause to be filed a Notice of Determination with the Sacramento County Clerk and, if the project requires a discretionary approval from any state agency, with the State Office of Planning and Research, pursuant to section 21152(a) of the Public Resources Code and section 15075 of the State EIR Guidelines adopted pursuant thereto.

Section 7. Pursuant to Guidelines section 15091(e), the documents and other materials that constitute the record of proceedings upon which the City Council has based its decision are located in and may be obtained from, the Office of the City Clerk at 915 I Street, Sacramento, California. The City Clerk is the custodian of records for all matters before the City Council.

Section 8. Sutter's Landing Park River Access Trail concept plan is hereby approved.

Section 9 Sutter's Landing Park Restoration concept plan is hereby approved.

Table of Contents:

Exhibit A: Sutter's Landing Park River Access Trail Project Mitigation Monitoring Program

EXHIBIT A

Mitigation Monitoring and Reporting Program

| Task and Brief Description | Timing | Responsible Party | Completed | Initials | Notes (optional) |
|----------------------------------------------------------------------------------------------------------------------------------------------------------------------------------------------------------------------------------------------------------------------------------------------------------------------------------------------------------------------------------------------------------------------------------------------------------------------------------------------------------------------------------------------------------------------------------------------------------------------------------------------------------------------------------------------------------------------------------------------------------------------------------------------------------------------------------------------------------------------------------------------------------------------------------------------------------------------------------------------------------------------------------------------------------------------------------------------------------------------------------------------------------------------------------------------------------------|----------------------------------|-------------------|--------------------------|----------|------------------|
| Aesthetics | | | | | |
| <p>AES-1: The City shall comply with City Code section 12.56.040 by establishing a replacement plan for any City trees that must be removed. The City shall plant additional trees where feasible. The exact number of trees and locations shall be determined during final design. The tree removal and replacement plan are subject to approval by the City Council. The City shall also comply with the Sacramento County Tree Ordinance (Chapter 19.04 and 19.12 of the County Code).</p> | Prior to Construction | City | <input type="checkbox"/> | _____ | |
| Air Quality | | | | | |
| <p>AQ-1: Implement SMAQMD Basic and Enhanced Construction Emission Control Practices to Reduce Fugitive Dust. The implementing agency will require, as a standard or specification of their contract, the construction contractor(s) to implement basic and enhanced control measures to reduce construction-related fugitive dust. Although the following measures are outlined in the SMAQMD's CEQA guidelines, they are required for the entirety of the construction area. The implementing agency will ensure through contract provisions and specifications that the contractor adheres to the mitigation measures before and during construction and documents compliance with the adopted mitigation measures.</p> <ul style="list-style-type: none"> • Water all exposed surfaces two times daily. Exposed surfaces include (but are not limited to) soil piles, graded areas, unpaved parking areas, staging areas, and access roads. • Cover or maintain at least 2 feet of freeboard space on haul trucks transporting soil, sand, or other loose material on the site. Any haul trucks that would be traveling along freeways or major roadways should be covered. | Prior to and During Construction | Contractor | <input type="checkbox"/> | _____ | |

EXHIBIT A

Mitigation Monitoring and Reporting Program

| Task and Brief Description | Timing | Responsible Party | Completed | Initials | Notes (optional) |
|------------------------------------------------------------------------------------------------------------------------------------------------------------------------------------------------------------------------------------------------------------------------------------------------------------------------------------------------------------------------------------------------------------------------------------------------------------------------------------------------------------------------------------------------------------------------------|-----------------------|-------------------|--------------------------|----------|------------------|
| <ul style="list-style-type: none"> Use wet power vacuum street sweepers to remove any visible trackout mud or dirt onto adjacent public roads at least once a day. Use of dry power sweeping is prohibited. Limit vehicle speeds on unpaved roads to 15 miles per hour. All roadway, driveway, sidewalk, and parking lot paving should be completed as soon as possible. In addition, building pads should be laid as soon as possible after grading unless seeding or soil binders are used. | | | | | |
| Biological Resources | | | | | |
| BIO-1: Every individual working on the Project must attend a biological awareness training session conducted by the Project biologist. This training program will include information regarding the sensitive habitats and an overview of special-status wildlife species that may be encountered within the work area. During the environmental awareness training, construction personnel will be briefed on the status of the beetle, the need to avoid damage to the elderberry host plant, and the possible penalties for not complying with these requirements. | Prior to Construction | Contractor | <input type="checkbox"/> | _____ | |
| BIO-2: Prior to the start of construction activities, the Project limits adjacent to the American River and riparian corridor will be marked with flagging, staking, or high visibility fencing to ensure construction will not further encroach into adjacent sensitive resources. | Prior to Construction | Contractor | <input type="checkbox"/> | _____ | |

EXHIBIT A

Mitigation Monitoring and Reporting Program

| Task and Brief Description | Timing | Responsible Party | Completed | Initials | Notes (optional) |
|------------------------------------------------------------------------------------------------------------------------------------------------------------------------------------------------------------------------------------------------------------------------------------------------------------------------------------------------------------------------------------------------------------------------------------------------------------------------------------------------------------------------------------------------------------------------------------------------------------------------------------------------------------------------------------------------------------------------------------------|---------------------|-------------------|--------------------------|----------|------------------|
| <p>BIO-3: Best Management Practices will be incorporated into Project design and Project management to minimize impacts on the environment including erosion and the release of pollutants (e.g., oils, fuels):</p> <ul style="list-style-type: none"> • Equipment used in and around jurisdictional waters must be in good working order and free of dripping or leaking contaminants. • All erosion control measures and storm water control measures will be properly incorporated and maintained. • All construction materials will be hauled off-site after completion of construction. • A chemical spill kit must be kept on site and available for use in the event of a spill. | During Construction | Contractor | <input type="checkbox"/> | _____ | |
| <p>BIO-4: Secondary containment consisting of plastic sheeting or other impermeable material will be used during refueling to prevent petroleum products or other potentially harmful chemicals from contaminating the soil or directly or indirectly entering the American River and associated riparian corridor. Secondary containment must have a raised edge (e.g. sheeting wrapped around wattles).</p> | During Construction | Contractor | <input type="checkbox"/> | _____ | |
| <p>BIO-5: After construction, temporary disturbed areas will be re-seeded with native grasses and forbs.</p> | Post Construction | Contractor | <input type="checkbox"/> | _____ | |
| <p>BIO-6: The contractor must not apply rodenticide or herbicide within the Project area during construction-related activities.</p> | During Construction | Contractor | <input type="checkbox"/> | _____ | |

EXHIBIT A

Mitigation Monitoring and Reporting Program

| Task and Brief Description | Timing | Responsible Party | Completed | Initials | Notes (optional) |
|--------------------------------------------------------------------------------------------------------------------------------------------------------------------------------------------------------------------------------------------------------------------------------------------------------------------------------------------------------------------------------------------------------------------------------------------------------------------------------------------------------------------------------------------------------------------------------------------------------------------------------------------------------------------------------------------------------------------------------------------------------------------------------------------------|----------------------------------|---------------------|--------------------------|----------|------------------|
| <p>BIO-7: Individual milkweed (<i>Asclepias</i>) plants within the BSA must be protected in place and not removed during construction. If necessary, individual plants may be relocated to an area outside of the Project area.</p> | Prior to and During Construction | City and Contractor | <input type="checkbox"/> | _____ | |
| <p>BIO-8: Work within or near the American River will be scheduled during periods of low water levels or within designated in-water work windows as determined through consultation with the National Marine Fisheries Service.</p> | Prior to and During Construction | City and Contractor | <input type="checkbox"/> | _____ | |
| <p>BIO-9: The Project biologist will complete a clearance survey for northwestern pond turtle immediately prior to initiating work near the American River as well as initiating clearing/grubbing in the riparian corridor.</p> <p>If a northwestern pond turtle is encountered during construction activities, construction activities will be suspended in a 100-foot radius of the animal until the animal leaves the Project site on its own volition. If necessary, the Project biologist will notify the Wildlife Agencies to determine the appropriate procedures related to relocation. Any worker who inadvertently injures or kills a northwestern pond turtle or who finds one dead, injured, or entrapped must immediately report the incident to the Project biologist.</p> | Prior to and During Construction | City and Contractor | <input type="checkbox"/> | _____ | |
| <p>BIO-10: If vegetation removal or ground disturbance is planned to occur during the nesting season (February 1st–August 31st), the Project biologist will conduct a pre-construction nesting bird survey within 5 days prior to vegetation removal or ground disturbance. Within 2 weeks of the nesting bird survey, all vegetation cleared by the Project biologist will be removed from the Project site.</p> <p>If an active nest is discovered, the Project biologist will determine the appropriate no-work buffer. The buffer will remain in place until</p> | Prior to and During Construction | City and Contractor | <input type="checkbox"/> | _____ | |

EXHIBIT A

Mitigation Monitoring and Reporting Program

| Task and Brief Description | Timing | Responsible Party | Completed | Initials | Notes (optional) |
|----------------------------------------------------------------------------------------------------------------------------------------------------------------------------------------------------------------------------------------------------------------------------------------------------------------------------------------------------------------------------------------------------------------------------------------------------------------------------------------------------------------------------------------------------------------------------------------------------------------------------------------------------------------------------------------------------------------------------------------------------------------------------|-----------------------|---------------------|--------------------------|----------|------------------|
| after the young have fledged, as determined by the Project biologist. Alternatively, the buffer may be removed if the Project biologist determines the nest is no longer active (e.g., predated, failed, abandoned, etc.). | | | | | |
| BIO-11: During the spring/summer season prior to construction the Project biologist must conduct pre-construction Swainson's hawk protocol-level surveys within the Project area plus a 0.25 mile buffer in accordance with California Department of Fish and Wildlife's guide for Swainson's Hawk Technical Advisory Committee. Pre-construction surveys will determine if active nests are present within the Project area or within 0.25 mile of Project activities. If an active nest is discovered within the survey area the Project biologist will determine the appropriate avoidance strategies (e.g., monitoring, no-work buffers, work windows, temporary sound/noise barriers, etc.) to avoid take of the nest and will coordinate with CDFW as needed. | Prior to Construction | City | <input type="checkbox"/> | _____ | |
| BIO-12: To avoid and minimize adverse effects to VELB, removal or trimming of elderberry shrubs will occur between November and February. | Prior to Construction | City | <input type="checkbox"/> | _____ | |
| BIO-13: Prior to initiating construction, an ESA fence will be installed with a 20-foot buffer around elderberry shrubs that will be protected in place within or adjacent to the Project area if the outer edges of their outer dripline extend within 20 feet of the Project impact area. The ESA will be positioned as far from the shrubs as practicable and will be installed under the direction of a USFWS-approved biologist. | Prior to Construction | City and Contractor | <input type="checkbox"/> | _____ | |
| BIO-14: To prevent fugitive dust from drifting into adjacent habitat, all clearing, grubbing, scraping, excavation, land leveling, grading, cut and fill, demolition activities, or other dust generating activities will be effectively controlled for fugitive dust emissions utilizing application of water or by presoaking. | During Construction | Contractor | <input type="checkbox"/> | _____ | |

EXHIBIT A

Mitigation Monitoring and Reporting Program

| Task and Brief Description | Timing | Responsible Party | Completed | Initials | Notes (optional) |
|------------------------------------------------------------------------------------------------------------------------------------------------------------------------------------------------------------------------------------------------------------------------------------------------------------------------------------------------------------------------------------------------------------------------------------------------------------------------------------------------------------------------------------|----------------------------------|---------------------|--------------------------|----------|------------------|
| BIO-15: A USFWS-approved biologist will be present to oversee all elderberry shrub relocation, trimming or removal. | Prior to Construction | City and Contractor | <input type="checkbox"/> | _____ | |
| BIO-16: No insecticides, herbicides, fertilizers, or other chemicals that might harm the beetle or its host plant will be used within 100 feet of elderberry shrubs with one or more stems measuring one inch or greater in diameter at ground level. | Prior to and During Construction | Contractor | <input type="checkbox"/> | _____ | |
| BIO-17: In accordance with the American River Parkway Plan, any elderberry shrub that the project cannot avoid must be excavated and relocated to a suitable area within the American River Parkway. Additional elderberry seedlings and associated native plants must be planted at a ratio prescribed in Table 3 of the Final IS/MND. | Prior to Construction | City and Contractor | <input type="checkbox"/> | _____ | |
| Cultural Resources and Tribal Cultural Resources | | | | | |
| CR-1: If previously unidentified cultural materials are unearthed during construction, work shall be halted in that area until a qualified archaeologist who meets or is overseen by an archaeologist meeting the Secretary of the Interior's Professional Qualification Standards in Archaeology can assess the significance of the find and develop a plan for documentation and treatment of resources. Additional archaeological survey will be needed if Project limits are extended beyond the present survey limits. | During construction | City and Contractor | <input type="checkbox"/> | _____ | |
| CR-2: Section 5097.94 of the PRC and Section 7050.5 of the California Health and Safety Code protect Native American burials, skeletal remains and grave goods, regardless of age and provide method and means for the appropriate handling of such remains. If human remains are encountered, work should halt in that vicinity and the County coroner should be notified immediately. At the same time, an archaeologist who meets or is overseen by an archaeologist | During construction | City and Contractor | <input type="checkbox"/> | _____ | |

EXHIBIT A

Mitigation Monitoring and Reporting Program

| Task and Brief Description | Timing | Responsible Party | Completed | Initials | Notes (optional) |
|---------------------------------------------------------------------------------------------------------------------------------------------------------------------------------------------------------------------------------------------------------------------------------------------------------------------------------------------------------------------------------------------------------------------------------------------------------------------------------------------------------------------------------------------------------------------------------------------------------------------------------------------------------------------------------------------------------------------------------------------------------------------------------------------------------------------------------------------------------------------------------------------------------------------------------------------------------------------------------------------------------------------------------------------------------------------------------------------------------------------------------------------------------------------------------------------------------------------------------------------------------------------------------------------------------------------------------------------------------------------------------------------------------------------------------------------------------------------------------|---------------------------------------------|--------------------------------|---------------------------------|--------------|------------------|
| <p>meeting the Secretary of the Interior's Professional Qualification Standards in Archaeology should be contacted to evaluate the situation. If the human remains are of Native American origin, the coroner must notify the NAHC within twenty-four hours of such identification. CEQA details steps to be taken if human burials are of Native American origin.</p> | | | | | |
| <p>TCR-1: Tribal Cultural Awareness and Sensitivity Training (Training)</p> <p>Cultural Awareness Training will be required by the City and developed by the applicant/Contractor for all personnel involved in project construction, including field consultants and construction workers, at their own expense. The training shall be developed in coordination with interested Native American Tribes and may be conducted by the project archaeologist.</p> <ul style="list-style-type: none"> The training shall be conducted before any project-related construction activities begin at the project site. The training will include relevant information regarding sensitive cultural resources and tribal cultural resources, including applicable regulations, protocols for avoidance, and consequences of violating State laws and regulations. The training will also describe appropriate avoidance and impact minimization measures for cultural resources and tribal cultural resources that could be located at the project site and will outline what to do and who to contact if any potential cultural resources or tribal cultural resources are encountered. The training will emphasize the requirement for confidentiality and culturally appropriate treatment of any discovery of significance to Native Americans and will discuss appropriate behaviors and responsive actions, consistent with Native American tribal values. | <p>Prior to During Construction</p> | <p>City and Contractor</p> | <p><input type="checkbox"/></p> | <p>_____</p> | |

EXHIBIT A

Mitigation Monitoring and Reporting Program

| Task and Brief Description | Timing | Responsible Party | Completed | Initials | Notes (optional) |
|-----------------------------------------------------------------------------------------------------------------------------------------------------------------------------------------------------------------------------------------------------------------------------------------------------------------------------------------------------------------------------------------------------------------------------------------------------------------------------------------------------------------------------------------------------------------------------------------------------------------------------------------------------------------------------------------------------------------------------------------------------------------------------------------------------------------------------------------------------------------------------------------------------------------------------------------------------------------------------------------------------------------------------------------------------------------------------------------------------------------------------------------------------------------------------------------------------------------------------------------------------------------------------------------------------------------------------------------------------------------------------------------------------------------------------------------------------------------------------------------------------------------------------------------------------------------------------------------------------------------------------|-----------------------------------------|----------------------------|--------------------------|--------------|------------------|
| <ul style="list-style-type: none"> All ground-disturbing equipment operators shall be required to receive the training and sign a form that acknowledges receipt of the training. | | | | | |
| <p>TCR-2: UAIC Monitoring</p> <p>Tribal monitoring is intended to minimize impacts to existing and/or previously undiscovered TCRs. The total time commitment of the Tribal Monitor(s) will vary depending on the intensity and location of construction and the sensitivity of the area. UAIC Tribal Representatives and/or Tribal Monitors act as representatives of their Tribal government. They are experts in their Tribal Cultural Resources (TCRs) who have the statutory authority and expertise to identify sites or objects of cultural value to their Tribe and to recommend appropriate treatment and final disposition of such sites or objects.</p> <ul style="list-style-type: none"> The City shall contact the UAIC at least 2 to 3 months prior to project initial ground-disturbing activities to retain the services of a Tribal Monitor(s). The duration of the construction schedule and Tribal Monitoring shall be determined at this time. A contracted Tribal Monitor(s) shall monitor the initial ground-disturbing activities in the project area. If there are cultural finds, the UAIC THPO may require additional Tribal Monitoring. Tribal Monitors or Tribal Representatives shall have the authority to direct that work be temporarily paused, diverted, or slowed within 100 feet of the immediate impact area if sites or objects of potential significance are identified. The temporary pause/diversion shall be of an adequate duration for the Tribal Representative to examine the resource. Treatment may include but is not limited to: | <p>Prior to and During Construction</p> | <p>City and Contractor</p> | <input type="checkbox"/> | <p>_____</p> | |

EXHIBIT A

Mitigation Monitoring and Reporting Program

| Task and Brief Description | Timing | Responsible Party | Completed | Initials | Notes (optional) |
|-------------------------------------------------------------------------------------------------------------------------------------------------------------------------------------------------------------------------------------------------------------------------------------------------------------------------------------------------------------------------------------------------------------------------------------------------------------------------------------------------------------------------------------------------------------------------------------------------------------------------------------------------------------------------------------------------------------------------------------------------------------------------------------------------------------------------------------------------------------------------------------------------------------------------------------------------------------------------------------------------------------------------------------------------------------------------------------------------------------------------------------------------------------------------------------------------------------------------------------------------------------------------------------------------------|----------------------------------|---------------------|--------------------------|----------|------------------|
| <p>a) recordation of the resource(s), b) avoidance and preservation of the resource(s), c) reburial of the resource(s) onsite in a designated area subject to no future disturbance. The location of the reburial shall be acceptable to the UAIC.</p> <ul style="list-style-type: none"> • To track the implementation of this measure, the Tribal Monitor(s) shall document field-monitoring activities on a Tribal Monitor log. The Tribal Monitor(s) shall wear the appropriate safety equipment while on the construction site. • The Tribal Monitor, in consultation with the UAIC THPO and the City, shall determine an end or reduction to the on-site monitoring if/when construction activities have a low potential for impacting Tribal Cultural Resources. • In the event the Tribal Monitor does not report to the job site at the scheduled time after receiving proper notice, construction activities may proceed without tribal monitoring. At no time, regardless of the presence or absence of a tribal monitor, shall suspected Tribal Cultural Resources be mishandled or disrespected. • The City shall assist with resolution of disagreements between the project proponent/contractor and the UAIC if such occurs on the project. | | | | | |
| <p>TCR-3: Wilton Monitoring</p> <p>The Wilton Rancheria shall be provided the opportunity to monitor all ground-disturbing activities associated with the construction of the ADA access path and stairs to ensure the protection of potential tribal cultural resources. The Tribal Monitor(s) will be compensated for their time. The City or its contractor shall notify the Wilton</p> | Prior to and During construction | City and Contractor | <input type="checkbox"/> | _____ | |

EXHIBIT A

Mitigation Monitoring and Reporting Program

| Task and Brief Description | Timing | Responsible Party | Completed | Initials | Notes (optional) |
|--------------------------------------------------------------------------------------------------------------------------------------------------------------------------------------------------------------------------------------------------------------------------------------------------------------------------------------------------------------------------------------------------------------------------------------------------------------------------------------------------------------------------------------------------------------------------------------------------------------------------------------------------------------------------------------------------------------------------------------------------------------------------------------------------------------------------------------------------------------------------------------------------------------------------------------------------------------------------------------------------------------------------------------------------------------------------------------------------------------------------------------------------------------------------------------------------------------------------------------------------------------------------------------------------------------------------------------------------------------------------------------------------------------------------------------------------------------------------------------------------------------------------------------------------------|----------------------------|----------------------------|---------------------------------|--------------|------------------|
| <p>Rancheria at least 72 hours in advance of the start of ground-disturbing activities to coordinate monitoring schedules. Tribal monitoring shall be limited to active ground disturbance areas during construction of the ADA access path and stairs. In addition, the City will maintain ongoing coordination with the Wilton Rancheria throughout the restoration phase of the project to allow for continued tribal input regarding restoration activities.</p> | | | | | |
| <p>TCR-4: Unanticipated Discoveries</p> <p>If any suspected TCRs or resources of cultural significance, including but not limited to features, anthropogenic/cultural soils, cultural belongings or objects (artifacts), shell, bone, shaped stones or bone, or ash/charcoal deposits are discovered by any person during construction activities including ground disturbing activities, all work shall pause immediately within 100 feet of the find, or an agreed upon distance based on the project area and nature of the find. Work shall cease in and within the immediate vicinity of the find regardless of whether the construction is being actively monitored by a Tribal Monitor, cultural resources specialist, or professional archaeologist.</p> <p>A Tribal Representative and the City shall be immediately notified, and the Tribal Representative in coordination with the City shall determine if the find is a Tribal Cultural Resource (PRC §21074) and the Tribal Representative shall make recommendations for further evaluation and treatment as necessary.</p> <p>Treatment and Documentation:</p> <ul style="list-style-type: none"> The culturally affiliated tribe shall consult with the City to (1) identify the boundaries of the TCR or resources of cultural significance, and (2) if feasible, identify appropriate preservation in place via avoidance measures, and long term management, or (3) if avoidance if infeasible, a reburial location in proximity of the find where no future | <p>During Construction</p> | <p>City and Contractor</p> | <p><input type="checkbox"/></p> | <p>_____</p> | |

EXHIBIT A

Mitigation Monitoring and Reporting Program

| Task and Brief Description | Timing | Responsible Party | Completed | Initials | Notes (optional) |
|------------------------------------------------------------------------------------------------------------------------------------------------------------------------------------------------------------------------------------------------------------------------------------------------------------------------------------------------------------------------------------------------------------------------------------------------------------------------------------------------------------------------------------------------------------------------------------------------------------------------------------------------------------------------------------------------------------------------------------------------------------------------------------------------------------------------------------------------------------------------------------------------------------------------------------------------------------------------------------------------------------------------------------------------------------------------------------------------------------------------------------------------------------------------------------------------------------------------------------------------------------------------------------------------------------------------------------------------------------------------------------------------------------------------------------------------------------------------------------------------------------------------------------------------------------------------------------------------------------------------------------------------------------------------------------------------|--------|-------------------|-----------|----------|------------------|
| <p>disturbance is anticipated. Permanent curation of TCRs will not take place unless approved in writing by the culturally affiliated Tribe.</p> <ul style="list-style-type: none"> • The City/Contractor shall provide secure, on-site locking storage or fenced area for Tribal cultural material recovered during construction activities. Only Tribal Representatives shall have access to the storage. • The construction contractor(s) and the City shall facilitate the respectful reburial of the culturally sensitive soils or objects. This includes providing a reburial location that is consistent with the Tribe's preferences, excavation of the reburial location, and assisting with the reburial, upon request. • Any discoveries shall be documented on a Department of Parks and Recreation (DPR) 523 form within 2 weeks of the discovery and submitted to the appropriate CHRIS center in a timely manner. • Work at the discovery location shall not resume until authorization is granted by the City in coordination with the culturally affiliated Tribe. • If articulated or disarticulated human remains, or human remains in any state of decomposition or skeletal completeness are discovered during construction activities, the City/County Coroner and the culturally affiliated Tribe shall be contacted immediately. Upon determination by the City/County Coroner that the find is Native American in origin, the Native American Heritage Commission will assign the Most Likely Descendent who will work with the City and landowner to define appropriate treatment and disposition of the burials. | | | | | |

EXHIBIT A

Mitigation Monitoring and Reporting Program

| Task and Brief Description | Timing | Responsible Party | Completed | Initials | Notes (optional) |
|--------------------------------------------------------------------------------------------------------------------------------------------------------------------------------------------------------------------------------------------------------------------------------------------------------------------------------------------------------------------------------------------------------------------------------------------------------------------------------------------------------------------------------------------------------------------------------------------------------------------------------------------------------------------------------------------------------------------------------------------------------------------------------------------------------------------------------------------------------------------------------------------------------------------------------------------------------------------------------------------------------------------------------------------------------------------------------------------|----------------------------------|---------------------|--------------------------|----------|------------------|
| Hazardous Waste | | | | | |
| HAZ-1: Coordination with Kinder Morgan will occur throughout final design and construction to avoid impacts to the pipeline. During construction, Kinder Morgan personnel to be on-site during all activities within 10 feet of their pipeline. | Prior to and During Construction | City and Contractor | <input type="checkbox"/> | _____ | |
| Hydrology and Water Quality | | | | | |
| WQ-1: Water Quality BMPs will be incorporated into Project design and Project management to minimize impacts on the environment including erosion and the release of pollutants (e.g. oils, fuels): <ul style="list-style-type: none"> • Exposed soils and material stockpiles would be stabilized, through watering or other measures, to prevent the movement of dust at the project site caused by wind and construction activities such as traffic and grading activities; • All construction roadway areas would be properly protected to prevent excess erosion, sedimentation, and water pollution; • All vehicle and equipment fueling/maintenance would be conducted outside of any surface waters; • Equipment used in and around jurisdictional waters must be in good working order and free of dripping or leaking contaminants; • Raw cement, concrete or concrete washings, asphalt, paint or other coating material, oil or other petroleum products, or any other substances that could be hazardous to aquatic | Prior to and During Construction | City and Contractor | <input type="checkbox"/> | _____ | |

EXHIBIT A

Mitigation Monitoring and Reporting Program

| Task and Brief Description | Timing | Responsible Party | Completed | Initials | Notes (optional) |
|--------------------------------------------------------------------------------------------------------------------------------------------------------------------------------------------------------------------------------------------------------------------------------------------------------------------------------------------------------------------------------------------------------------------------------------------------------------------------------------------------------------------------------------------------------------------------------------------------------|-----------------------|-------------------|--------------------------|----------|------------------|
| <p>life shall be prevented from contaminating the soil or entering jurisdictional waters;</p> <ul style="list-style-type: none"> • All erosion control measures and storm water control measures would be properly maintained until the site has returned to a pre-construction state; • All disturbed areas would be restored to pre-construction contours and revegetated, either through hydroseeding or other means, with native or approved non-invasive exotic species; • All construction materials would be hauled off-site after completion of construction. | | | | | |
| <p>WQ-2: An Encroachment permit from the CVFPB will be obtained during the permitting phase of the Project. A comprehensive hydraulic analysis will be prepared as part of the permit application to ensure that the proposed structures will not obstruct the floodplain.</p> | Prior to Construction | City | <input type="checkbox"/> | _____ | |
| Noise | | | | | |
| <p>NOI-1: The following noise control measures will be incorporated into the contract documents for construction of the Project:</p> <ul style="list-style-type: none"> • Consistent with Section 8.68.080 of the City of Sacramento Noise Ordinance, construction activities shall be limited to the hours between 7:00 a.m. and 6:00 p.m. Monday through Saturday and between the hours of 9:00 a.m. and 6:00 p.m. on Sundays. • Construction equipment and vehicles should be equipped with properly operating mufflers according to the | During Construction | Contractor | <input type="checkbox"/> | _____ | |

EXHIBIT A

Mitigation Monitoring and Reporting Program

| Task and Brief Description | Timing | Responsible Party | Completed | Initials | Notes (optional) |
|----------------------------------------------------------------------------------------------------------------------------------------------------------------------------------------------------------------------------------------------------------------------------------------------------------------------------------------------------------------------------------------------------------------------------------------------------------------------------------------------------------|--------|-------------------|-----------|----------|------------------|
| <p>manufacturers' recommendations. Air compressors and pneumatic equipment should be equipped with the manufacturer-recommended muffler, and tools should be equipped with shrouds or shields. An internal combustion engine will not be operated on the job site without the appropriate muffler.</p> <ul style="list-style-type: none"> The use of loud sound signals shall be avoided in favor of light warnings except those required by safety laws for the protection of personnel. | | | | | |
| USFWS Conditions: To be Included upon Issuance of the Biological Opinion for Impacts to VELB | | | | | |
| CDFW Permit Conditions: To be Included upon Issuance of the 1600 Streambed Alteration Agreement | | | | | |
| CVFPB Permit Conditions: To be Included upon Issuance of the CVFPB Encroachment Permit | | | | | |