

City of Sacramento  
**Parks and Community Enrichment Commission Report**  
915 I Street Sacramento, CA 95814  
www.cityofsacramento.org

---

**File ID:** 2026-01120

6/4/2026

---

## **Community Centers Overview**

File ID: 2026-01120

**Location:** Citywide

**Recommendation:** Receive and file.

**Contact:** Anthony Munoz, Recreation Manager, (916) 808-6251, amunoz@cityofsacramento.org; Samantha Vu, Recreation Superintendent, (916) 808-1572, svu@cityofsacramento.org; Department of Youth, Parks, and Community Enrichment

**Presenter:** Anthony Munoz, Recreation Manager, (916) 808-6251, amunoz@cityofsacramento.org; Samantha Vu, Recreation Superintendent, (916) 808-1572, svu@cityofsacramento.org; Department of Youth, Parks, and Community Enrichment

### **Attachments:**

1-Description/Analysis

2-Presentation

## **Description/Analysis**

### **Issue Detail:**

#### **Community Centers Overview**

The Youth, Parks, and Community Enrichment Department (YPCE) manages 15 community centers and clubhouses throughout the City of Sacramento. These facilities are operated by a dedicated Community Center team of career employees, including a Recreation Manager, a Recreation Superintendent, Program Supervisors, Program Coordinators, Program Leaders/Developers, Customer Service staff, and Custodial staff. Together, this team oversees the daily operations and management of each facility, delivers recreational programming for all ages and abilities, provides high-quality customer service, and maintains safe, clean, and welcoming environments for the community.

YPCE Community Centers offer a wide range of recreational programs and services, including after-

---

school and summer youth and teen programming, senior activities, health and wellness programs, summer camps, facility rentals, special events, and emergency response resources and support. Most Community Center sites operate Monday through Friday from 8:00 am to 8:00 pm and Saturdays from 8:00 am to 12:00 pm, with hours varying at select clubhouses and centers.

The following community centers and clubhouses are currently operated by YPCE:

- Belle Coolegge Community Center
- Carl Johnston Community Center
- Coloma Community Center
- Clunie Community Center
- East Portal Clubhouse
- Evelyn Moore Community Center
- George Sim Community Center
- Joe Mims Jr. Hagginwood Community Center
- North Natomas Community Center (operated by Aquatics)
- Oak Park Community Center
- Rose Garden Room at the Frederick N. Evans (McKinley) Rose Garden
- Sam and Bonnie Pannell Community Center
- Shepard Garden and Arts Center
- South Natomas Community Center
- Southside Clubhouse

In addition, the following city-owned facilities are leased to local non-profits and community-based organizations to support their independent programming and services:

- Elmo Slider Clubhouse
- Sierra 2 Center
- Woodlake Clubhouse
- Robertson Community Center

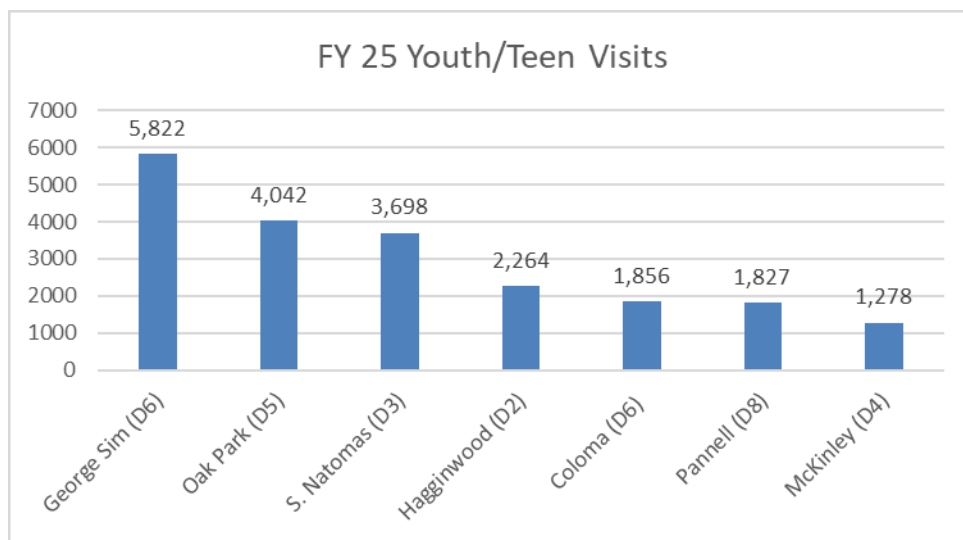
### **FY25 Program Highlights**

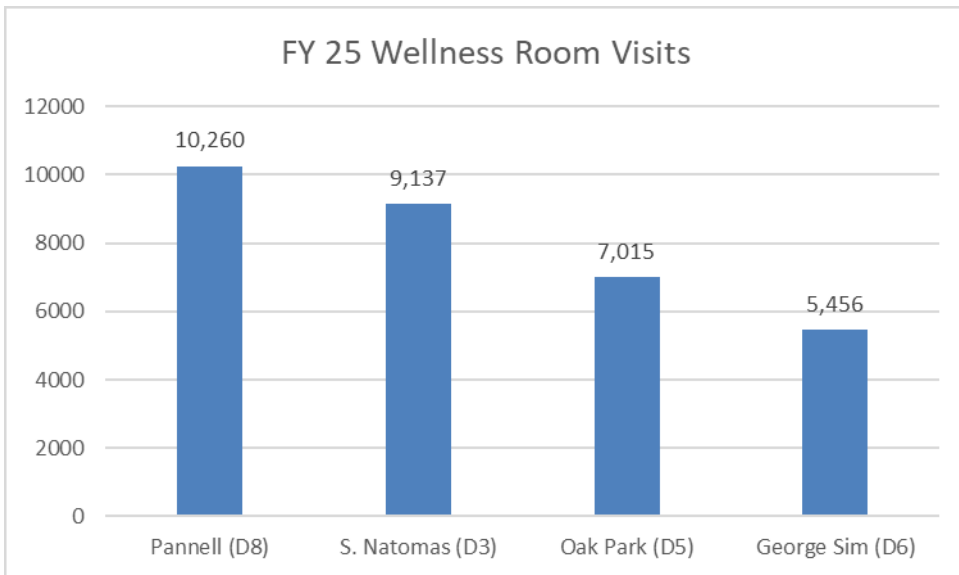
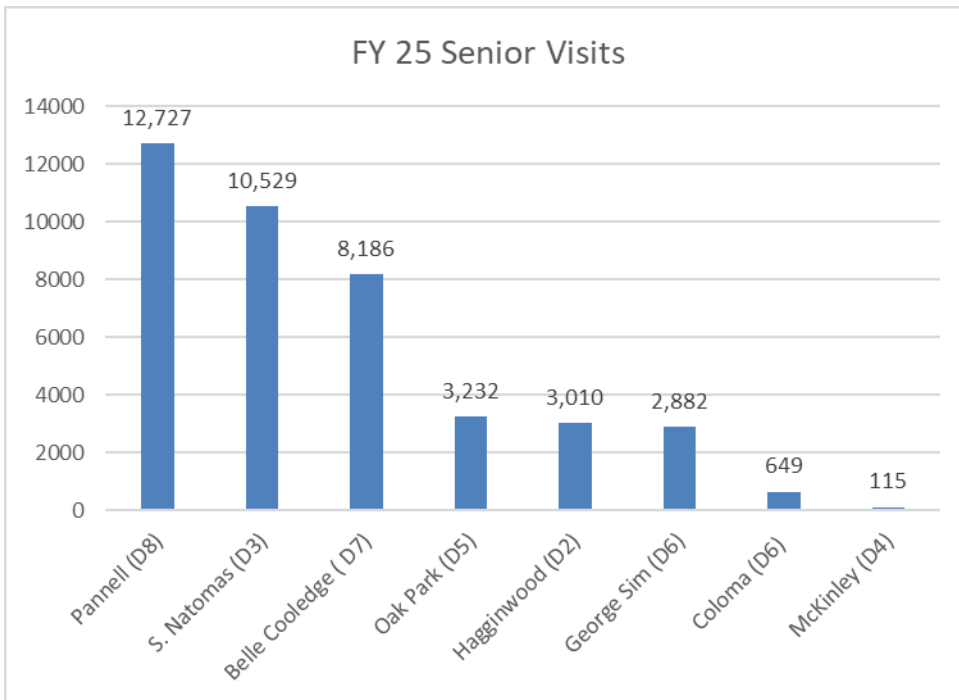
In FY25, Community Centers continued to provide a diverse range of youth and teen programming, including after-school enrichment activities focused on sports, arts and crafts, academic support, and social engagement. Summer camp programs offered outdoor recreation, arts, sports, and enrichment opportunities for youth ages 6-12 and teens ages 13-17. During the 8-week Summer 2025 session, Community Centers recorded **2,038** youth and teen enrollments. Overall, youth and teen programs generated more than **20,787** visits during the fiscal year and summer season.

Community Centers also expanded programming and services for older adults across the city. Through senior programming, wellness activities, and partnerships with Meals on Wheels, Centers recorded more than **41,320** senior visits and **31,868** wellness room visits during FY25. Staff also

coordinated large-scale senior special events throughout north, central, and south Sacramento, including the Senior Flower Power Fest, Summer Luau, and Holiday Festival, which promoted social connection, wellness, and community engagement for older adults. Additionally, Community Centers hosted year-round special events for youth, families, and seniors, including movie nights, game tournaments, and holiday celebrations.

Throughout the year, Community Centers partnered with community-based organizations and agencies, including but not limited to the Sacramento Public Library, Natomas Unified School District, Sacramento City Unified School District, and Meals on Wheels to provide programs and services that expand current community center offerings.





### Community Center Rentals and Usage

In FY25, the Center team booked **1,082** rental permits, including weddings, quinceaneras, birthdays,

and family celebrations. Consistent with City Council Resolution No. 2018-0371, we waived qualifying **rental fees for community organizations and non-profits.**

Community Centers have provided critical community resources, programs, and services. In addition to offering a variety of recreational programming, the Centers continue to provide emergency response support through the activation of clean air and cooling centers, continuing to meet the community's needs.

### **Youth Program Scholarship Fund (YPSF)**

YPCE offered Youth Program Scholarship Fund (YPSF) to increase access to high-quality recreation programs for youth ages 0-24 from income-eligible families. Scholarships cover registration and membership fees for qualifying programs from September 1, 2024, to December 31, 2025. In FY 25, YPSF awarded **\$129,000** in scholarships for 109 participants increasing program accessibility across Sacramento.

### **Summer Oasis in Community Centers**

The summer day camp is offered through Summer Oasis - Kinder (age 5), Summer Oasis (ages 6-12), and Summer Oasis - Teen (ages 13-17), providing age-specific programming in safe, welcoming environments. New this year, the Department added a dedicated Kinder program for 5-year-olds who will be entering Transitional Kindergarten (TK) in Fall 2026, providing a supportive space for youth to build confidence, develop social connections, and transition into a school-based setting.

Summer Oasis offers the traditional summer camp experience with both indoor and outdoor activities. Campers enjoy a variety of engaging experiences, including arts and crafts, sports, games, and neighborhood trips, including swimming at participating locations. Meals are provided in partnership with local school districts.

Summer registration began on April 8, 2026, with **1,184** participants enrolled for programs running June 8 through August 15, 2026, Monday through Friday, from 9 a.m. to 2 p.m.

### **Leisure Enrichment**

Leisure Enrichment is an extension of City programs and serves as YPCE's method of addressing service gaps by contracting recreation activities and special interest classes. Instructors of contracted classes utilize our facilities, parks, and registration systems to provide a variety of enrichment programs to the community.

Interested instructors can submit inquiries and proposals to [LeisureEnrichment@CityofSacramento.org](mailto:LeisureEnrichment@CityofSacramento.org). The Leisure Enrichment team will assess whether the proposed subject matter complements existing programs and addresses a gap in service. If deemed

appropriate, the program manager will arrange an interview to evaluate the instructor's qualifications and alignment with our mission and core values. Instructors who proceed to the next stage in the process will need to complete a brief online application, which the department will rate. If the ratings meet the minimum score, the department will initiate the contracting phase.

Leisure Enrichment contractors must undergo a criminal background check and complete mandated reporter training if they are working with youth. Additionally, they are required to provide proof of insurance, a business operations tax certificate, and submit tax forms.

Currently, the Leisure Enrichment program holds 27 contracts for instructors offering classes at various centers and parks. Contracted classes are available at the following locations:

- 28th & B Skate Park
- Belle Cooleedge CC
- Clunie CC
- Coloma CC
- Didion School
- Garcia Bend Park
- George Sim CC
- Glenbrook Park
- Hagginwood CC
- Hart Senior Center
- McKinley Park
- North Natomas AQ Complex
- North Natomas Community Center
- North Natomas Community Park • Oki Park

Contract classes currently cover the following subject matter:

- Arts & Crafts
- Basketball
- Dance
- Dog Obedience
- Flag Football
- Martial Arts/Karate
- Skateboarding
- Soccer
- Somatic Muscle Release
- Table Tennis

- Tai Chi/Qigong
- Taiko Drumming
- Tennis
- Theater Arts
- Yoga
- Zumba

### **Athletic Field Use Permits**

The Community Centers division offers a Reservations Office at the Coloma Community Center that issues park picnic and athletic field permits. The City of Sacramento's Youth, Parks, and Community Enrichment (YPCE) Department is committed to ensuring all community members have equitable access to sports fields. YPCE has approximately 245 Sports Field Listings in our reservation system. All sports fields can be rented out for recreational use. Sports fields are allocated and permitted annually following YPCE's Athletic Field Use and Allocation Guidelines

Sports field requests are channeled through the Reservations Office located at the Coloma Community Center. A letter reviewing the criteria and deadlines to apply for athletic field use is shared with sports organizations/field users at the beginning of August. Athletic Field Use Guide/Applications for Long Term Athletic Fields for January through December are due on the third Thursday in September. Application(s) must be received/postdated on or before the third Thursday in September. Any requests received after these deadlines will be considered on a first-come-first serve basis after the allocation has been completed. Organizations must be in good financial standing to have their applications for field use considered. Good financial standing means no outstanding invoices greater than 30 days owed to the City of Sacramento.

### **Youth Sports Field Fee Reduction and Waiver Program**

The City of Sacramento continues to administer the Youth Sports Field fee reduction/fee waiver program through the Council approved Resolution No. 2022-0221. Fee reduction/waiver forms will be provided when applicants receive their 2027 Long Term Sports Field permits. The Youth Sports Field fee reduction/fee waiver program has no measure on how fields are allocated and is intended to ensure that all youth sports leagues within the city have an equal opportunity to utilize the available sports fields if they meet the criteria outlined below. The Youth Program Scholarship Fund (YPSF) has been restructured to continue to cover fee waivers and reductions for youth sports field rentals.

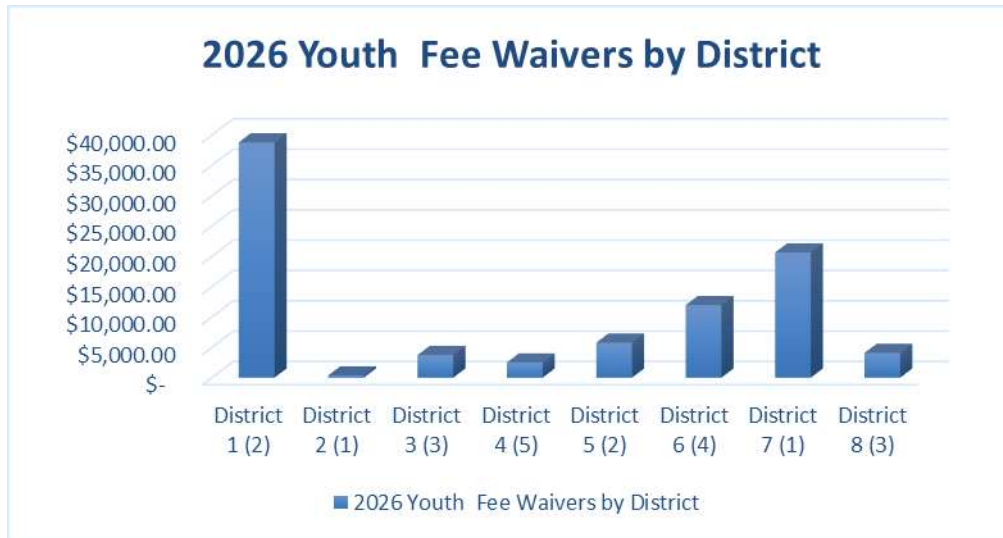
The City Manager, or the Director of the Department of Youth, Parks, & Community Enrichment as the City Manager's designee, is authorized to issue a **Sports Field Permit fee waiver** for an organization who meets the following criteria:

- a) A recreation youth league;

- b) A non-profit in good standing, or governmental agency;
- c) The majority of registered participants are Sacramento residents;
- d) The league does not charge to participate; and
- e) The league uses volunteer coaches only



\$104,290.50 in fees waived in 2025



\$87,317.25 waived for 2026 Thus Far

The City Manager, or the Director of the Department of Youth, Parks, & Community Enrichment as the City Manager’s designee, is authorized to issue a **Sports Field Permit fee reduction of 50%** for an organization who meets the following criteria:

- a) A recreation youth league;
- b) A non-profit in good standing, or governmental agency;
- c) The majority of registered participants are Sacramento residents;
- d) The league uses volunteer coaches only

### Seasons

As more sports have become year-round, YPCE has established seasons to assist with the allocation process.

Sports seasons are defined as follows:

- Spring (baseball, softball): February 15th - June 30<sup>th</sup>
- Fall (football, soccer): August 15th - December 31<sup>st</sup>
- Shoulder Seasons: July 1st - August 14th and January 1st - February 14th

In-season sports are given priority over off-season sports. Fees may apply to leagues/teams requesting field space during the shoulder seasons for pre-season and post-season activities, as

availability may be limited.

**Allocation Criteria**

The field splitting process includes the allocation of field space to organizations who have submitted a completed long term sports field application by the established application deadline. Definition of First Consideration: Preceding all others in order as a matter (application) is weighed and considered when formulating a plan (allocation of field space). An example of first consideration in context can be: A returning organization in good standing and who has met all application requirements has the ability to receive first consideration outside of departmental use.

The order of consideration for field use is as follows:

- City of Sacramento Park Maintenance
- City Programs
- Priority Agreement Holders
- Historic Users (3 or more years of continued use and on-time payments)
- Youth Programs (non-profit)
- Adult Programs (non-profit)
- Youth Programs (for profit)
- Adult Programs (for profit)

**Field Allocations and Permits**

A tentative permit is issued to an organization from the City of Sacramento/YPCE Reservations Office. The tentative permit remains in pending status until all additional required documentation has been received by the designated deadline. Only once all additional required criteria have met satisfactory status, shall the permit move from tentative to firm.

**Permits are not transferable.**

2025 Application Status	Youth	Adults
Applications Received	69	25
Permits Issued	526	225
<i>*Total number of Youth served 14,000-15,000</i>		
2026 Application Statistics	Youth	Adult
Applications Received	72	30
Permits Issued	543	251
<i>*Total number of Youth served 16,000-17,000</i>		

**Payments and Cancellation Policy**

Permit fees are due on the first of the month. Once an application is issued a contract number the cancellation policy becomes applicable.

**Policy Considerations:** Not applicable.

**Economic Impacts:** None.

**Environmental Considerations:** Not applicable.

**Sustainability:** Not applicable.

**Commission/Committee Action:** Not applicable.

**Rationale for Recommendation:** Youth, Parks, and Community Enrichment provide annual updates to commission on Community Centers and Community Recreation.

**Financial Considerations:** Not applicable.

**Local Business Enterprise (LBE):** Not applicable.

# Community Centers

## Programming



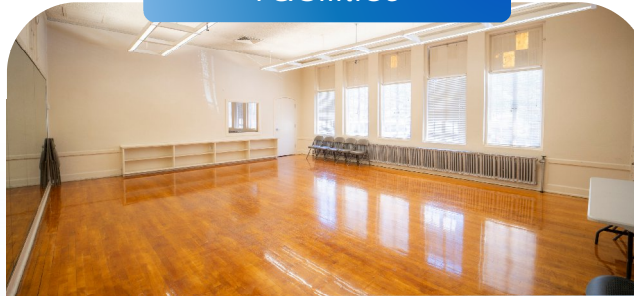
### Community Center Offerings

- Tots and Rec
- Youth After School Program
- Youth Special Events
- Teen After School Program
- Teen Special Events
- Senior Special Events
- Senior Programming
- Wellness Room

### Leisure Enrichment

- **9,887** enrollments in FY25
- **27** Recreation Services Contracts
- **18** Locations Served (Community Centers and Parks)

## Facilities



15

City-operated Community Centers & Clubhouse

\$288k

Youth-Based Community Center Fees Waived

\$147K

Sports Field Fees Waived

Summer Oasis  
Enrollments

2,038

Youth & Teens

YPSF  
Scholarships

Awarded  
\$129K

## Center Visits

